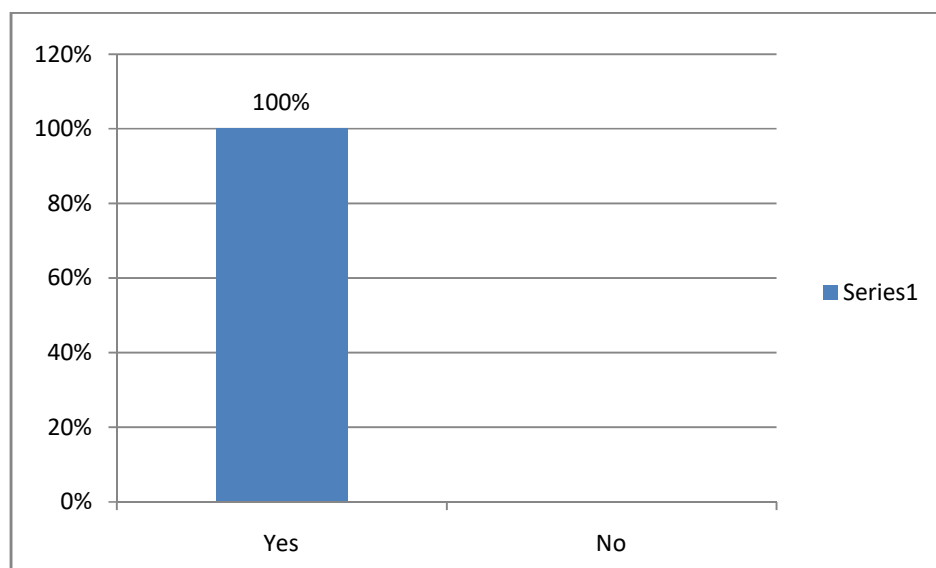


STUDENT'S FEEDBACK ANALYSIS REPORT FOR THE YEAR 2017-18

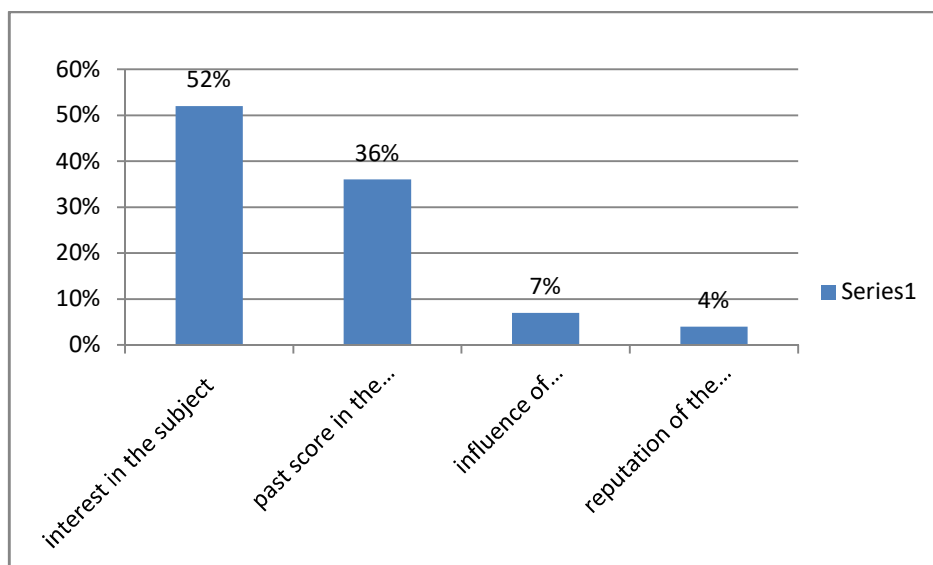
Feedback Questionnaire

A. Academic

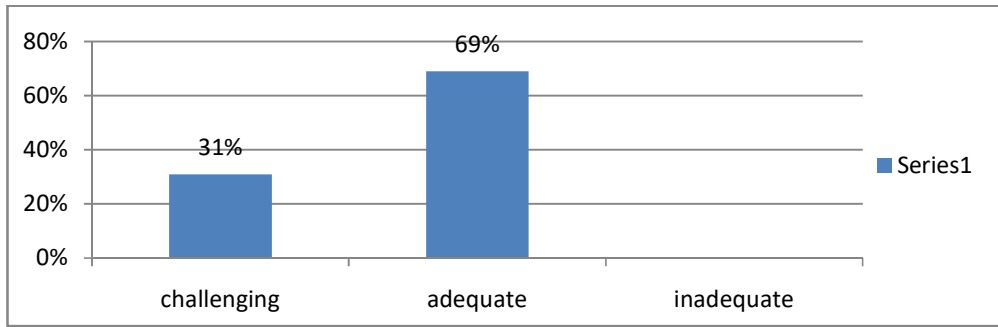
Did you get a prospectus giving details of the courses you were going to undertake?



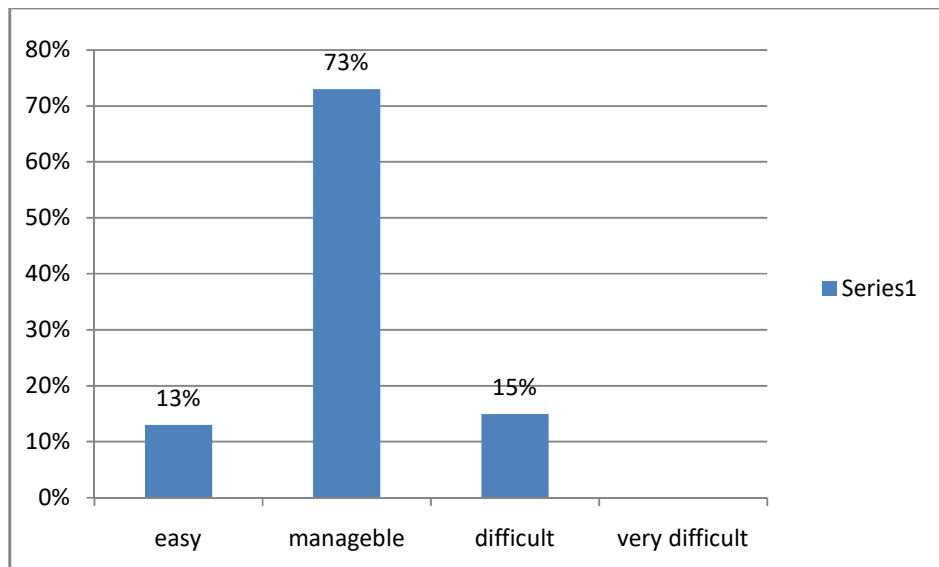
What determined your choice of subject?



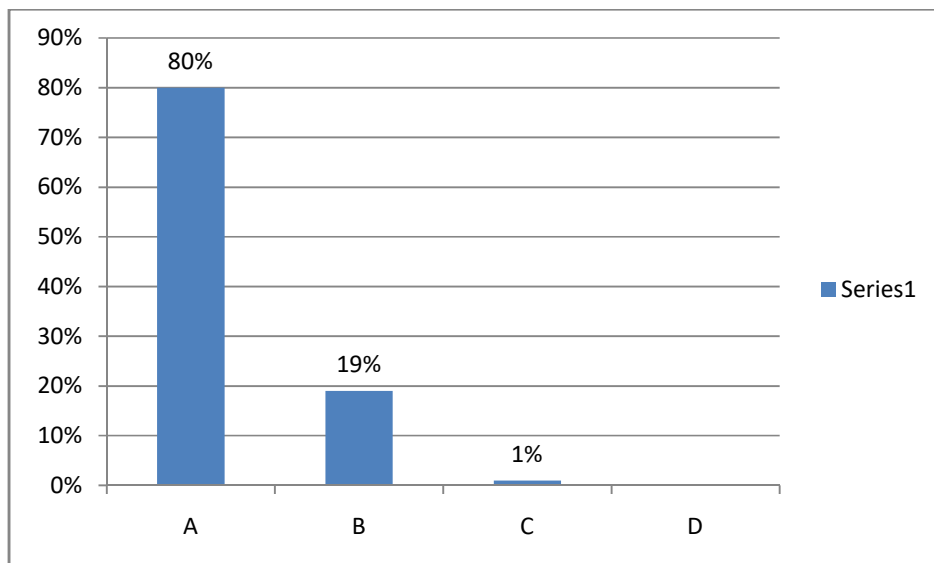
The syllabus was



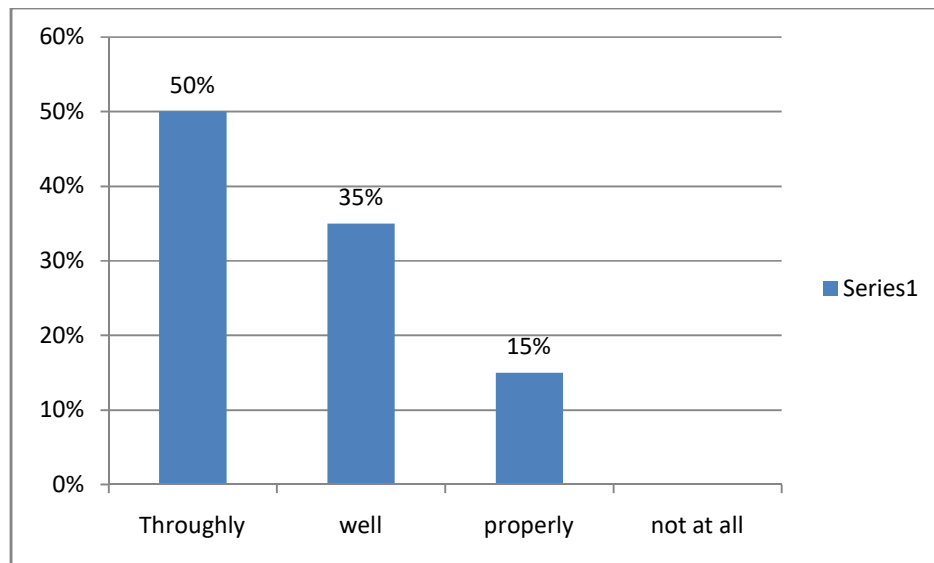
How was the difficulty level of the course ?



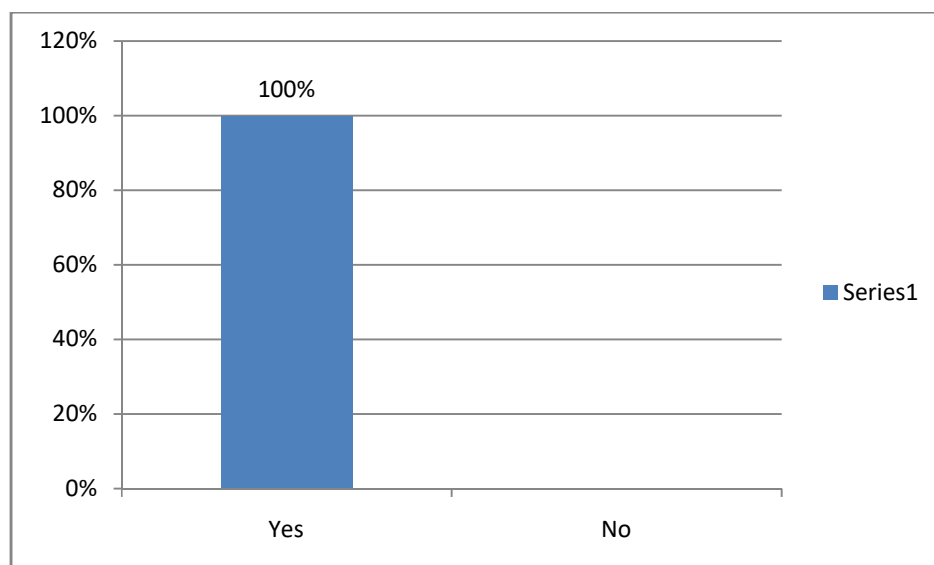
How much of the course was completed before the end semester examination ?



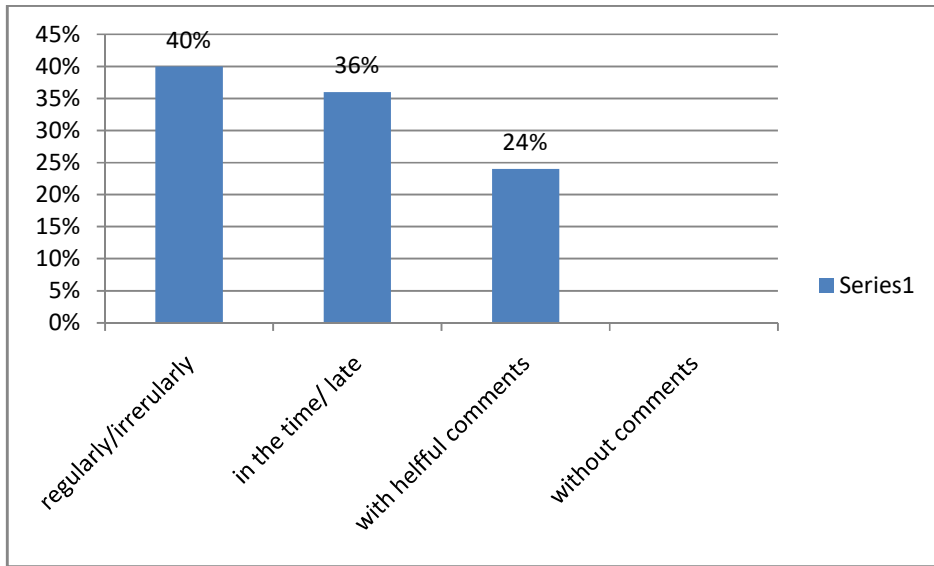
How well did the teacher prepare for class?



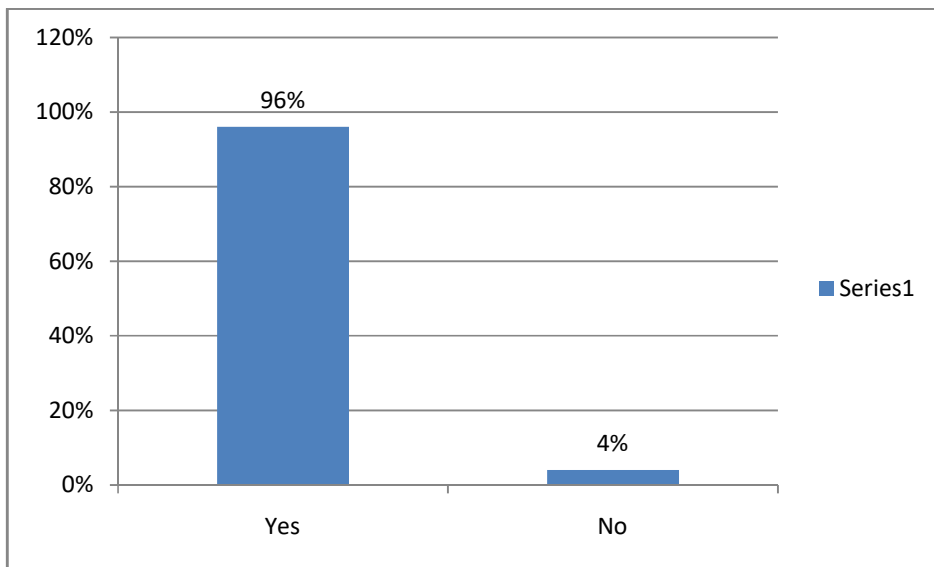
Did the teacher encourage student participation in class ?



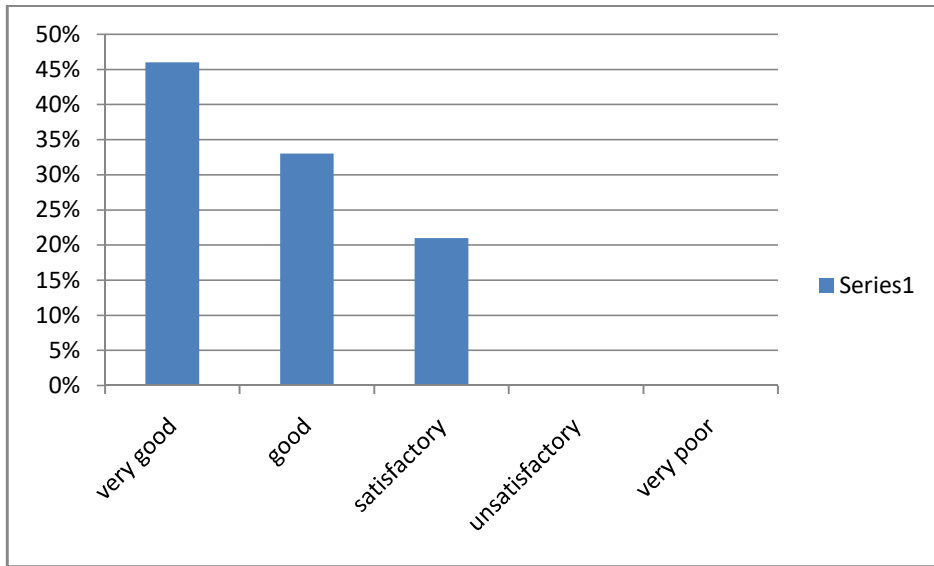
How did the teacher provide feedback on your performance?



Were your written assignments returned and discussed with you ?

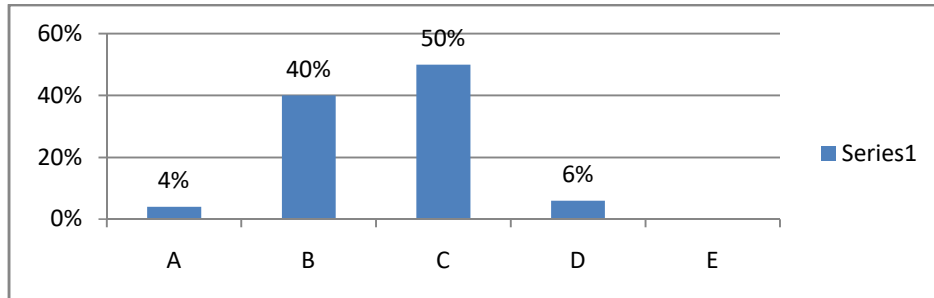


How do you rate the students-teacher relationship in the institution as a whole ?

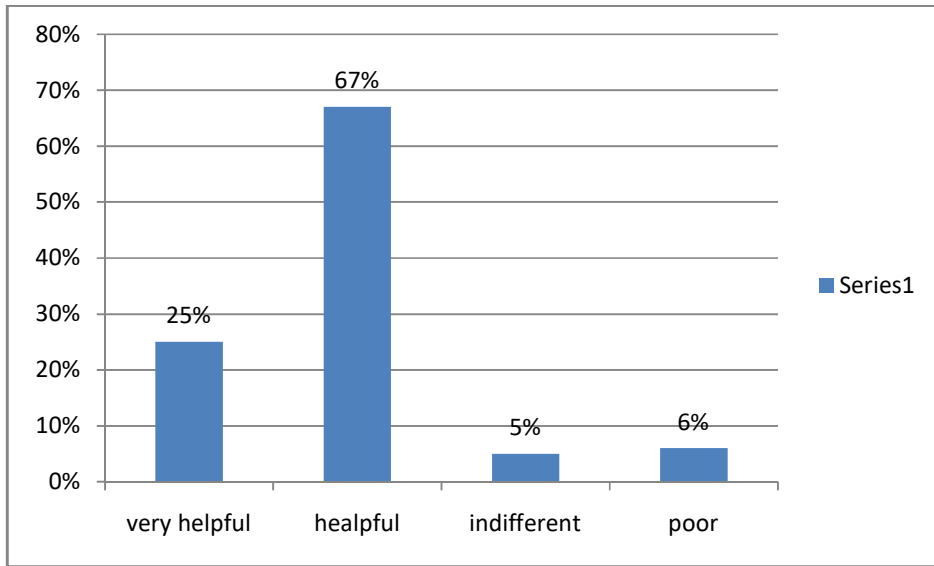


B. Infrastructure

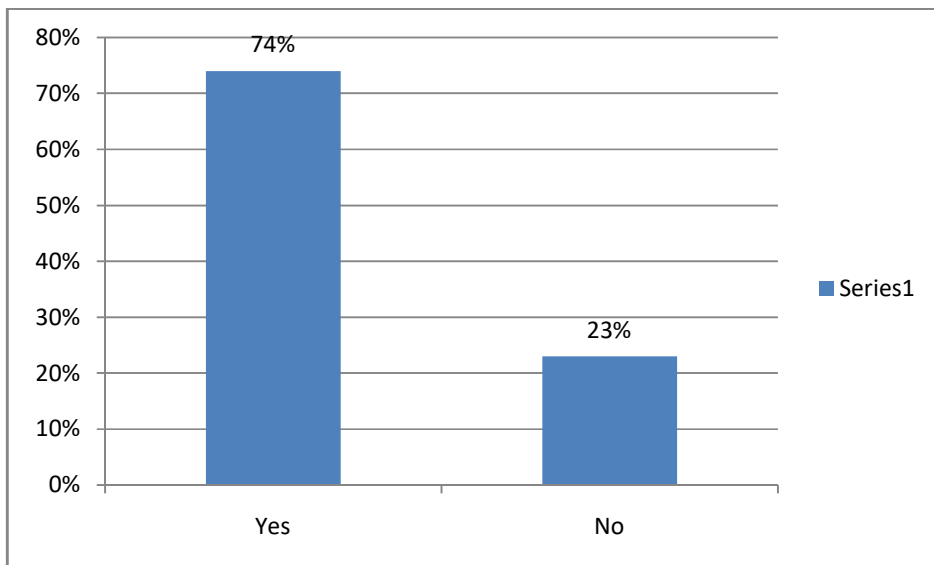
How do you rate the overall infrastructure facility of the institution if you had rate in 5 points grade seale (highest A-B-C-D-E lowest)



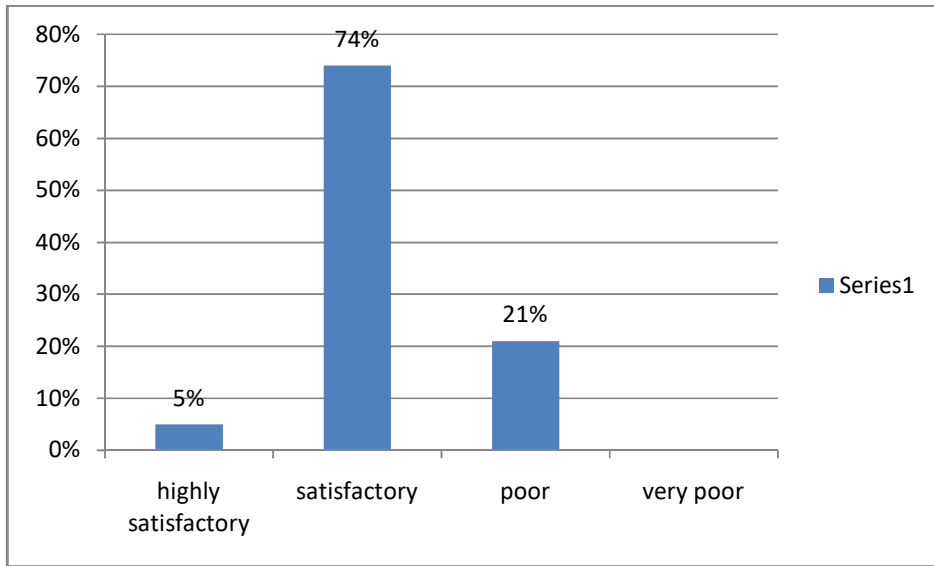
How do you find the institution administrative offices?



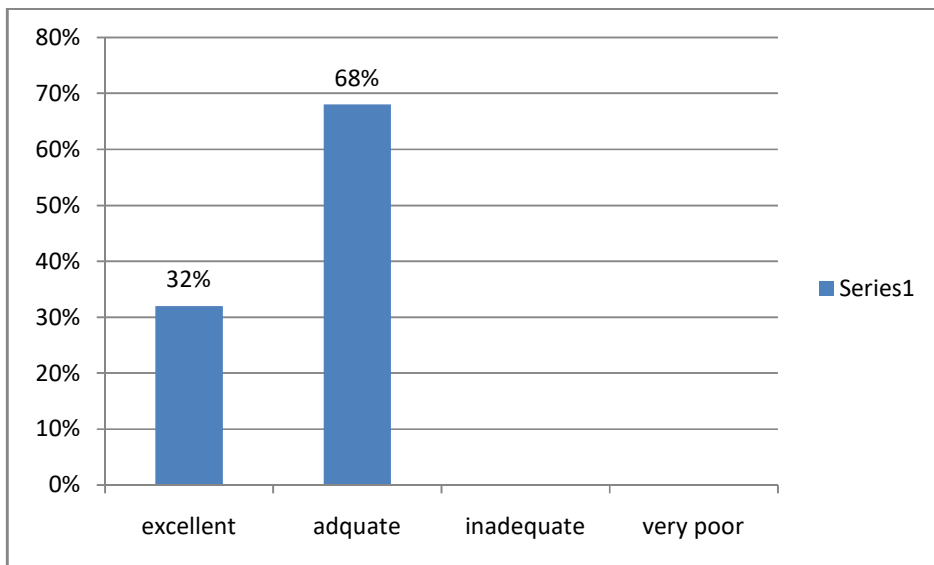
Do you satisfied with the toilet facility available in the institution?



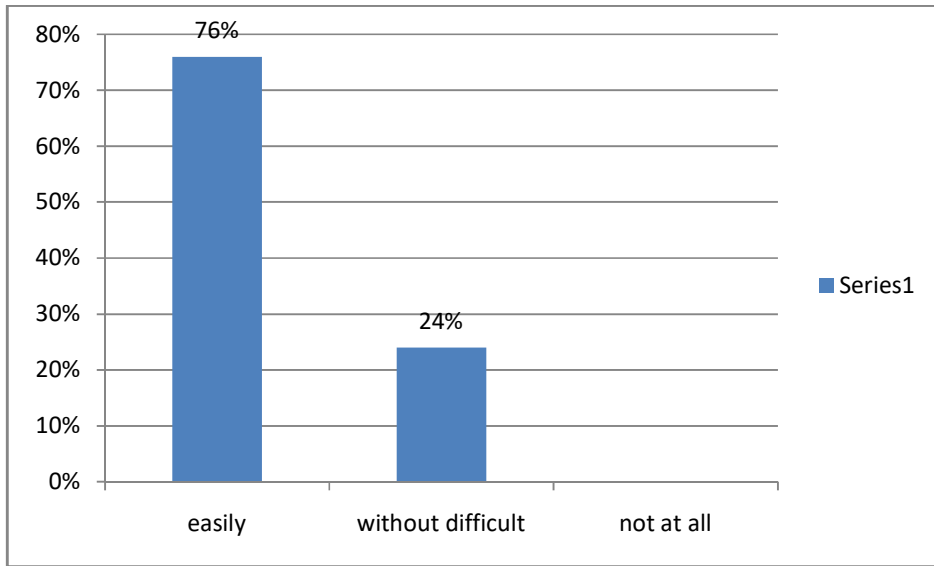
How do you find the drinking water facility of the institution?



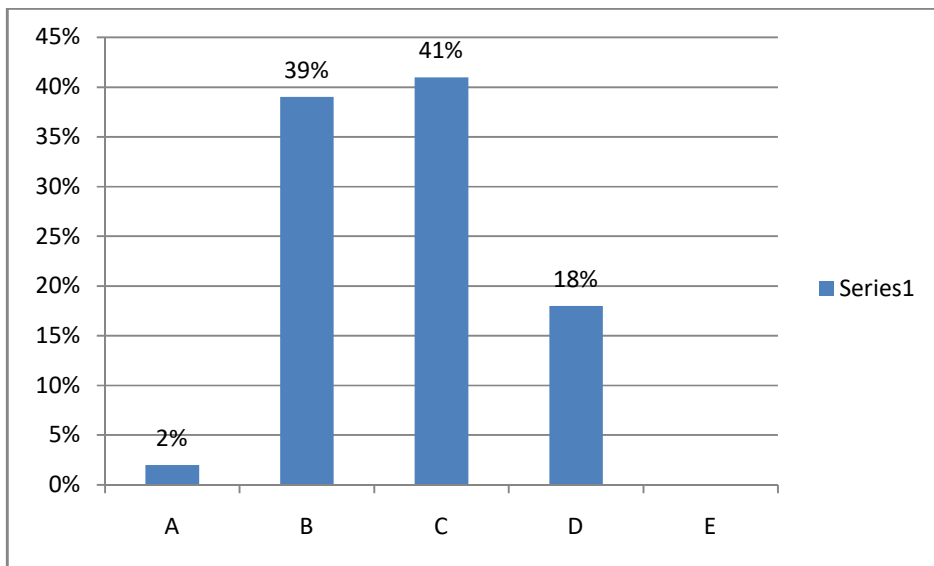
What is your opinion about the library facility of the institution?



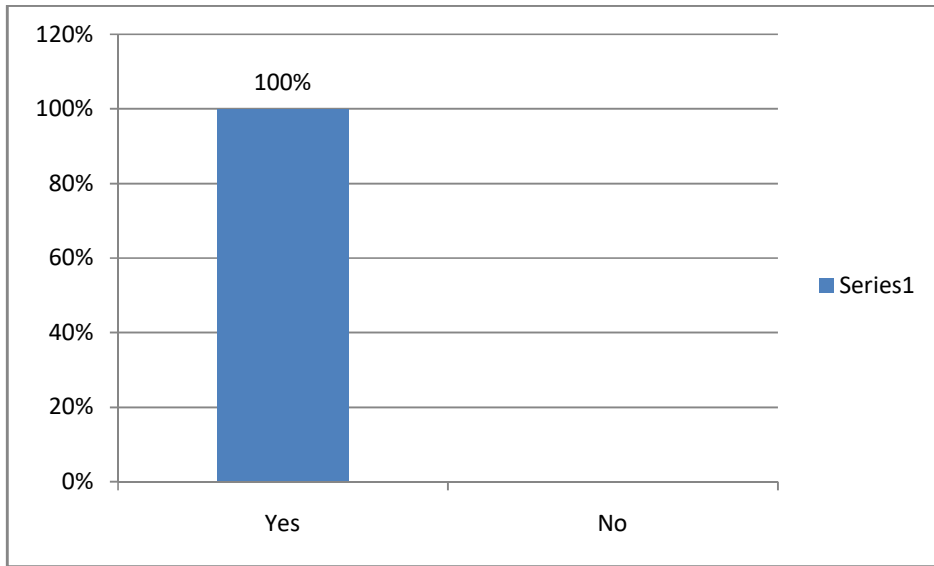
Were you able to get the prescribed text book and reference book in the library?



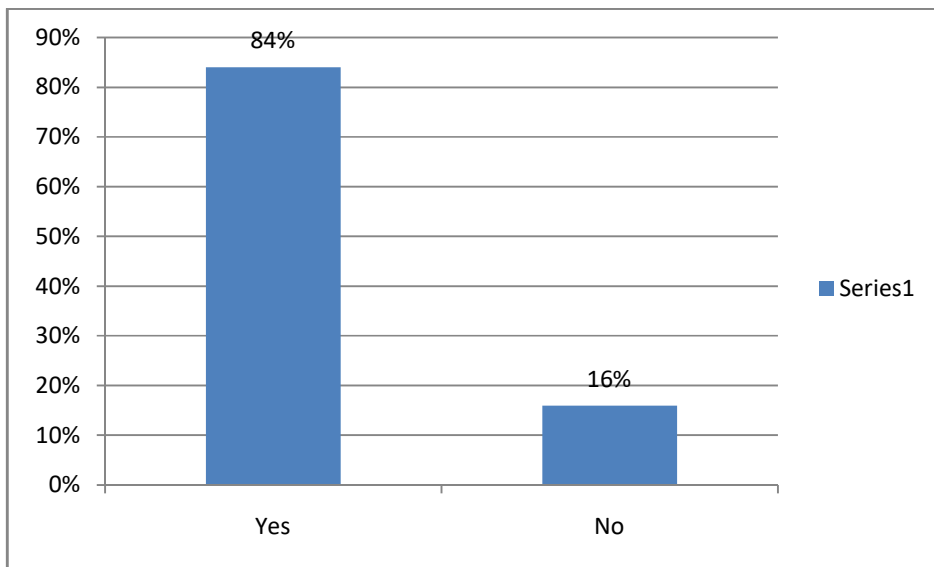
How do you rate the canteen facility available in the institution in a 5 point rating scale (highest A-B-C-D-E lowest)



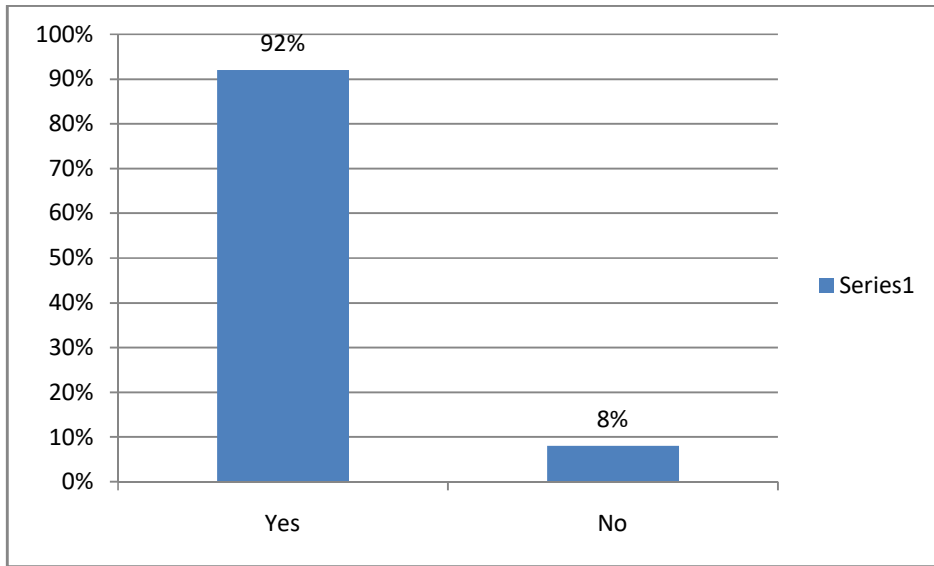
Are you satisfied with the classroom facility of the institution ?



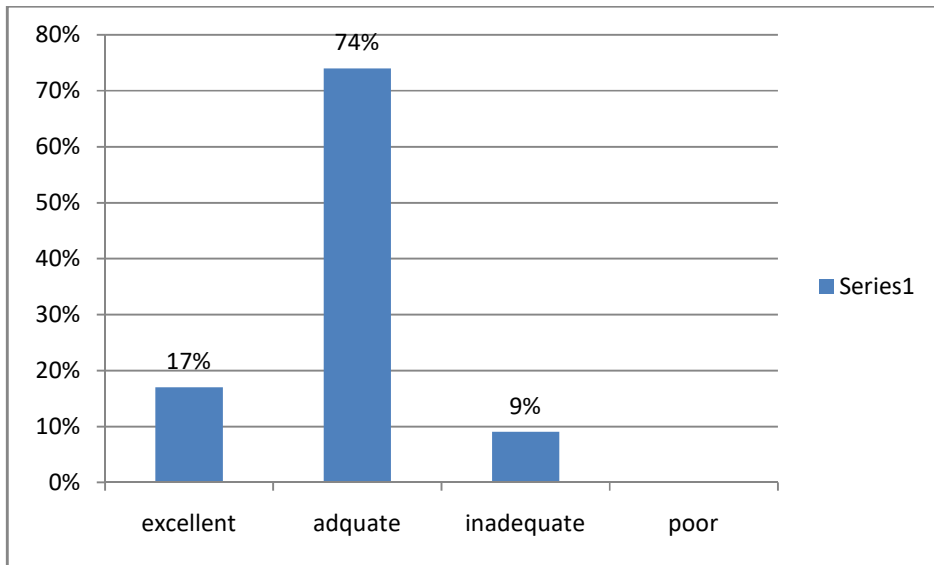
Were you satisfied with the Gymnasium of your institution?



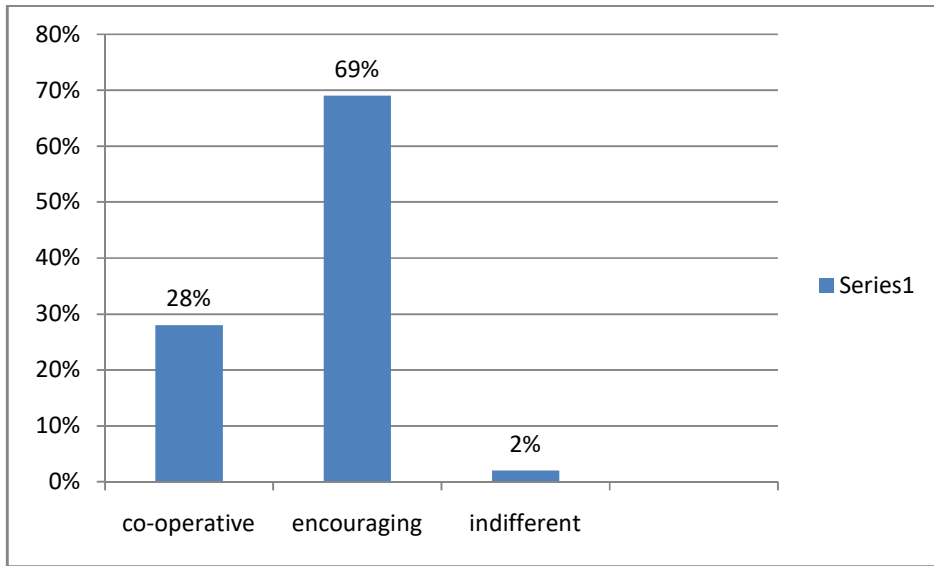
Did you have Physical instructor in the institution?



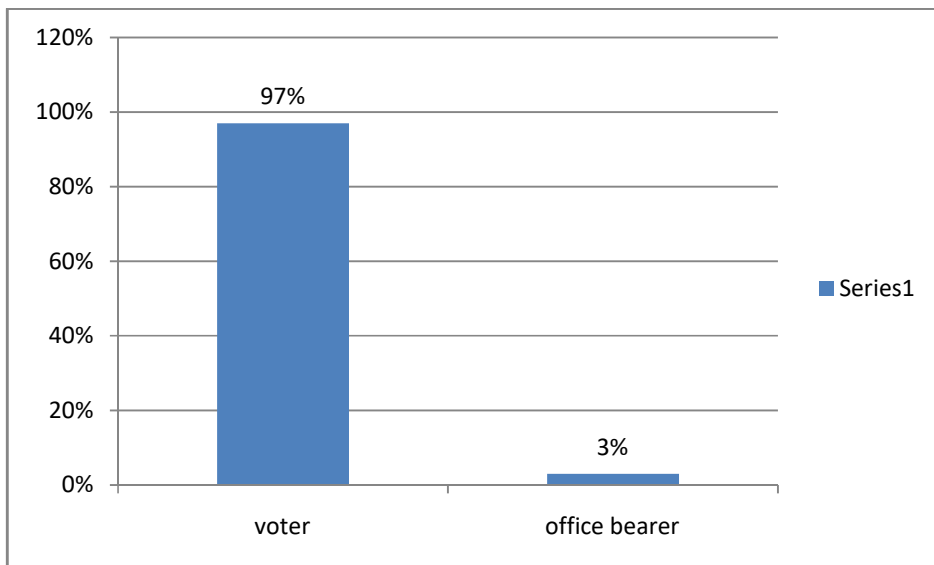
What is your opinion about the play ground and sports equipments of your institution.



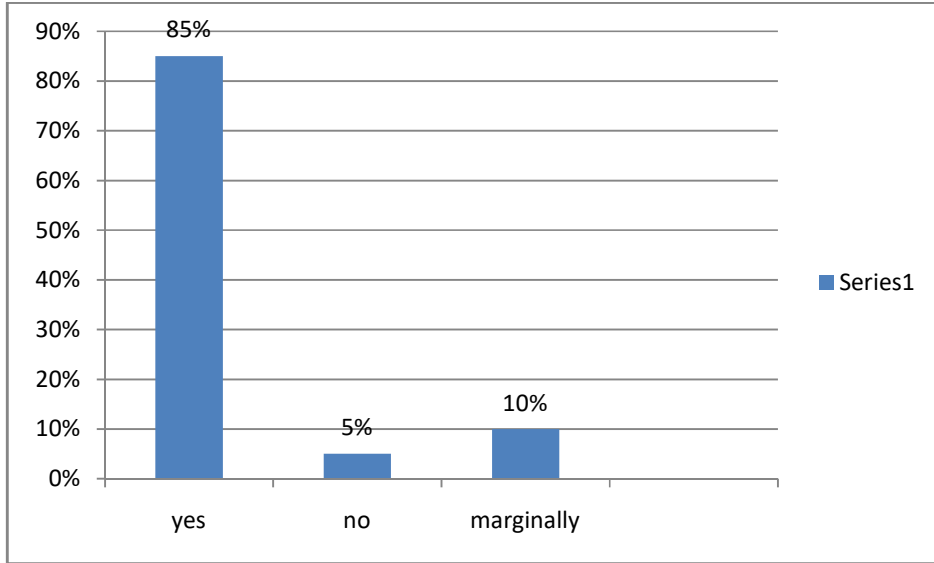
What was the attitude of teachers to non scholastic activities (Sports, Music, Literary)



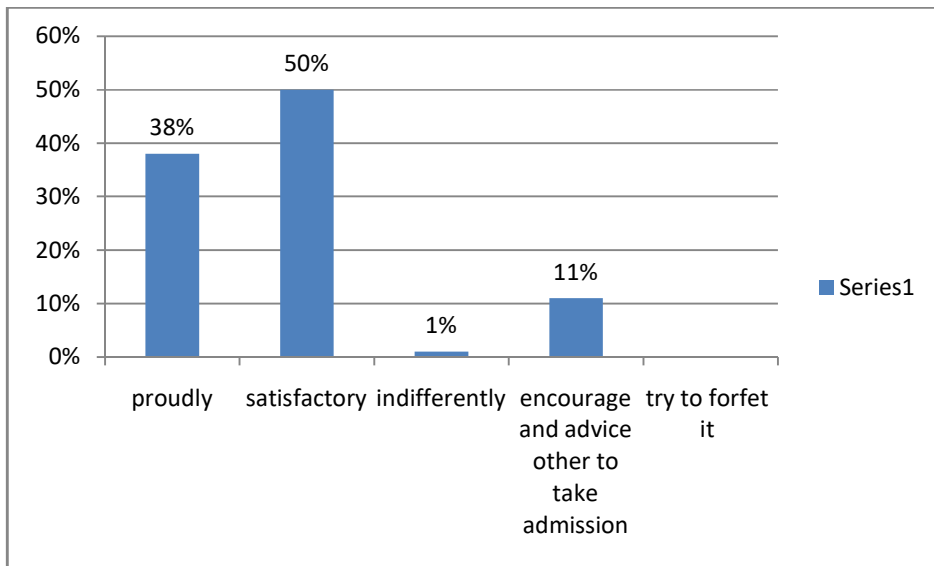
What was your relationship with the students union?



Has your time at the institution been intellectually enriching?



After leaving the institution how will you talk about it?



With reference to the above graph, 100% of the students got a prospectus giving details of the courses they were going to undertake. 52% students believed that their choice of subject was driven by their interest in the subject. 69% students found the syllabus to be adequate. 73% students felt that the course was manageable. 80% students found that 90% to 100% of the course was completed before the end semester examination. 50% of the students felt that the teachers prepared thoroughly for class. 100% of the students affirmed that teachers encourage student participation in class. 40% of the students believed that the teachers provide feedback on their performance with helpful comments and 36% of students asserted that teachers review their works in time and provide helpful feedback. 96% of students said “yes” when asked if their written assignments were returned and discussed with them. The percentage of students rating the student- teacher relationship in the institution as very good are 46%. 50% of students rated

the overall infrastructure facility of the institution as c in 5 points grade scale (Highest A-B-C-D-E lowest) 67% students find the institution's administrative office helpful. 74% students find the drinking water facility of the institution is adequate. 75% students were able to get the prescribed text book and reference book in the library easily. 41% rated the canteen facility available in the institution as c in 5 points grade scale (highest A-B-C-D-E lowest). 100% of students were satisfied with the classroom facility of the institution. 84% of students were satisfied with the gymnasium facility of the institution. 92% of students agreed that they have physical instruction in the institution. 74% of students believed that they have an adequate playground and sports equipments in the institution. 69% students believed that the attitude of teachers to non-scholastic activities is encouraging. 97% students are voters of the student's union. 85% students think that their time at the institution been intellectually enriching. 50% of the students after leaving the institution talk satisfactorily about the college.

Suggestion:

- The overall infrastructure of the institution need urgent up gradation and improvement.
- The canteen facility of the institution must be improved further to suit the need of the students.