

# NAHARKATIYA COLLEGE

## STUDENT'S FEEDBACK ANALYSIS REPORT FOR THE YEAR 2019-20

Established in 1964, Naharkatiya College is on an endeavour to help students realise their dreams, offering assistance, spotting talent, and developing potential to inspire students to pursue their passions and turn them into successful professionals.

Students are the future of our country and therefore to turn them into ideal citizens and human capital, development and enhancement of the quality of their learning experience is necessary. Feedback from students thus allows the institute to evaluate the quality of education provided and to enhance its capability towards providing the best services to its students.

The feedback analysis process thus requires the student's involvement to be a necessary part of the assessment and calls for an active role to be played by the students in this regard.

For this purpose, consistently toward the end of the semester in the period of April, feedback forms are distributed to the final year college undergraduates. The IQAC department of the college is responsible for the circulation, distribution and collection of filled feedback forms from the students.

### Goals of students' feedback on the institution:

There are three basic goals for student feedback:

1. To provide students the chance to remark on their learning experience and to gauge their attitudes towards the examination system
2. To evaluate the performance of the academic programs considering the experience and expectations of the students
3. To offer faculty members feedback to enhance curriculum delivery and/or content.

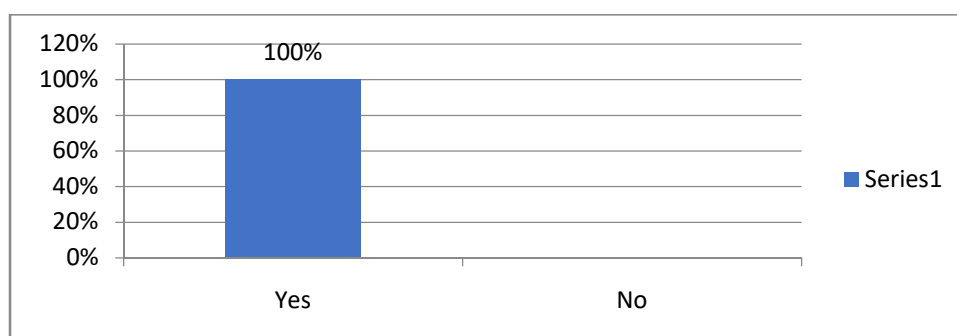
### Cornerstone of Parent's Feedback Form:

The following concerns are highlighted on the student feedback form:

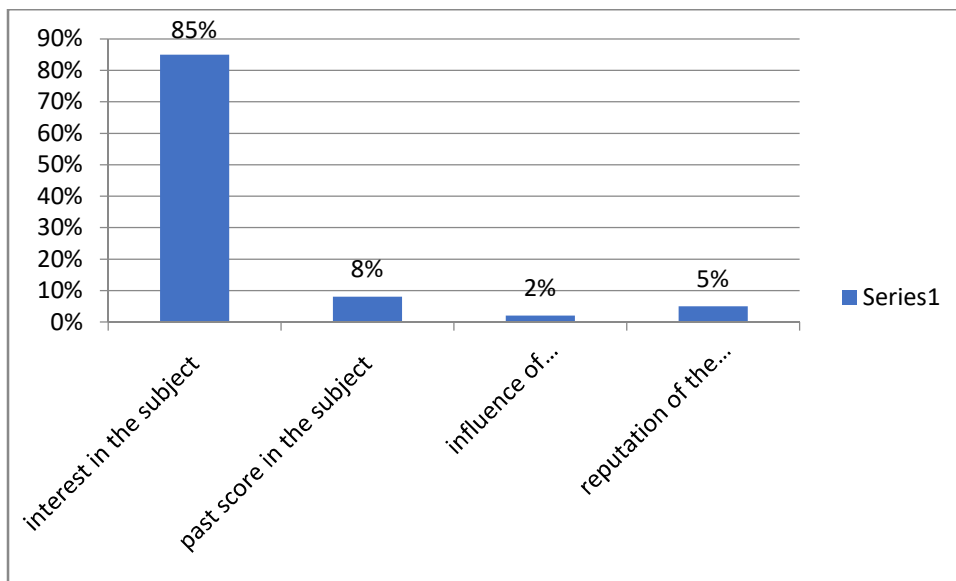
1. The syllabus and other academic matters
2. The student-teacher relationship in the institution as a whole
3. The overall infrastructure facility of the institution
4. The toilet facility, library facility, drinking water facility etc provided by the institution

### Academic

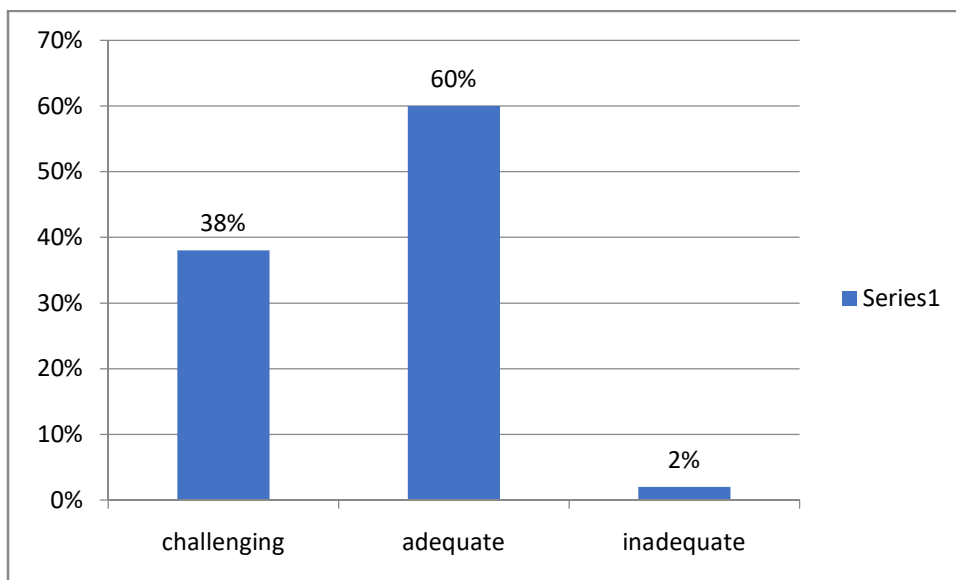
Did you get a prospectus giving details of the Courses you were going to undertake?



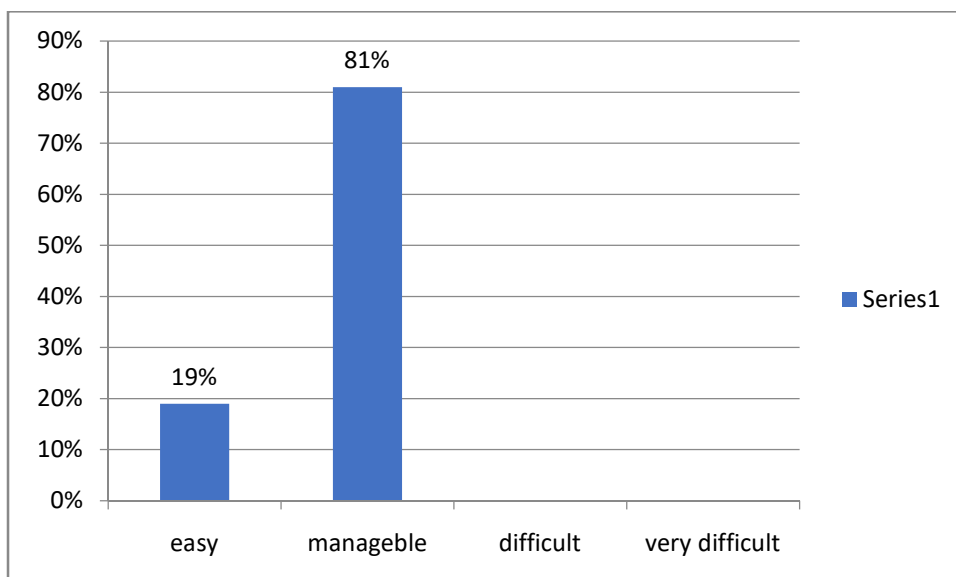
What determined your choice of subject?



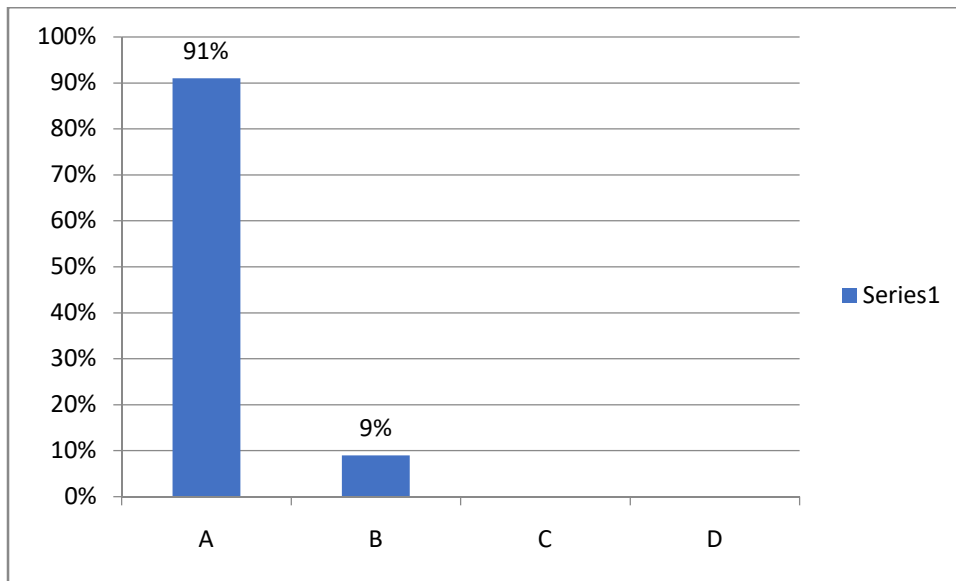
The syllabus was



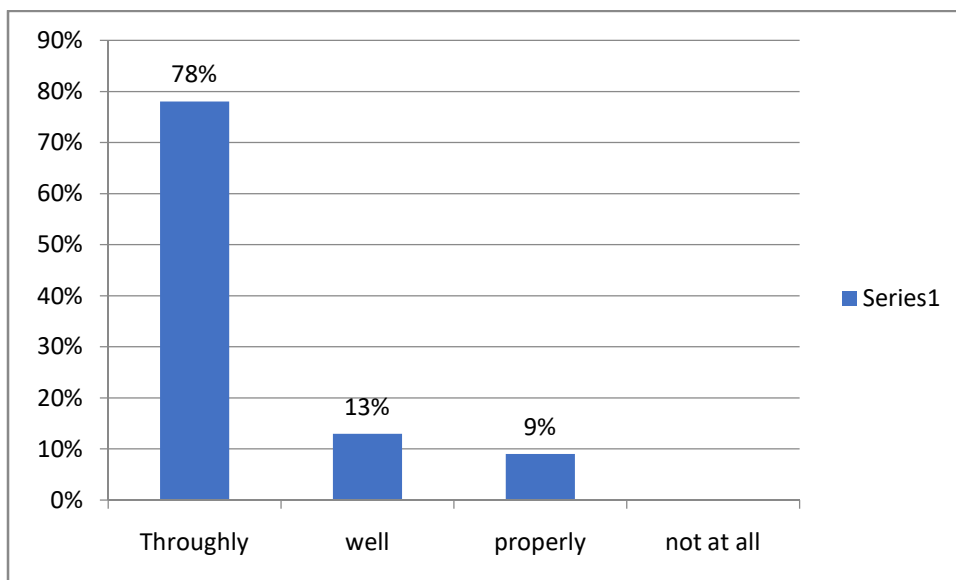
How was the difficulty level of the course?



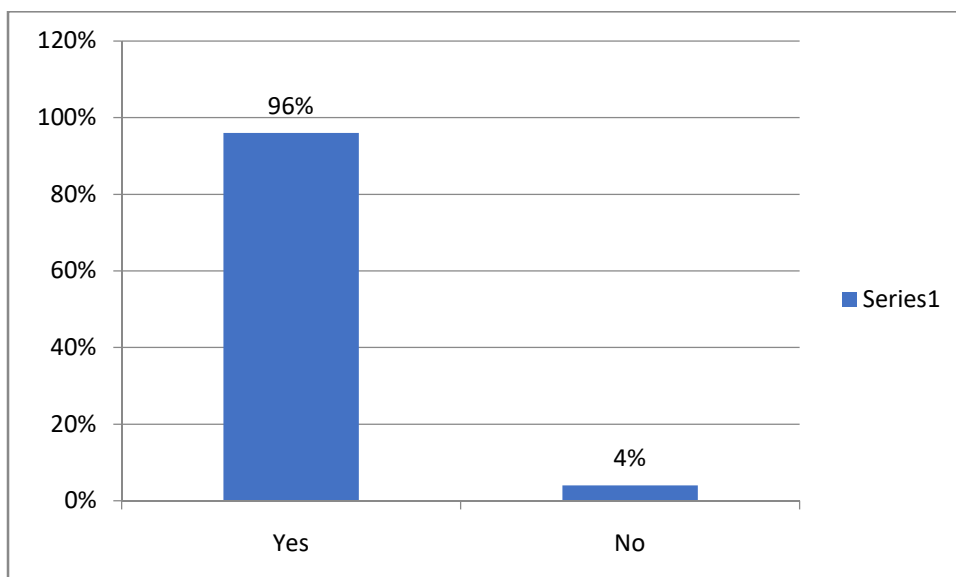
How much of the course was completed before the end semester examination?



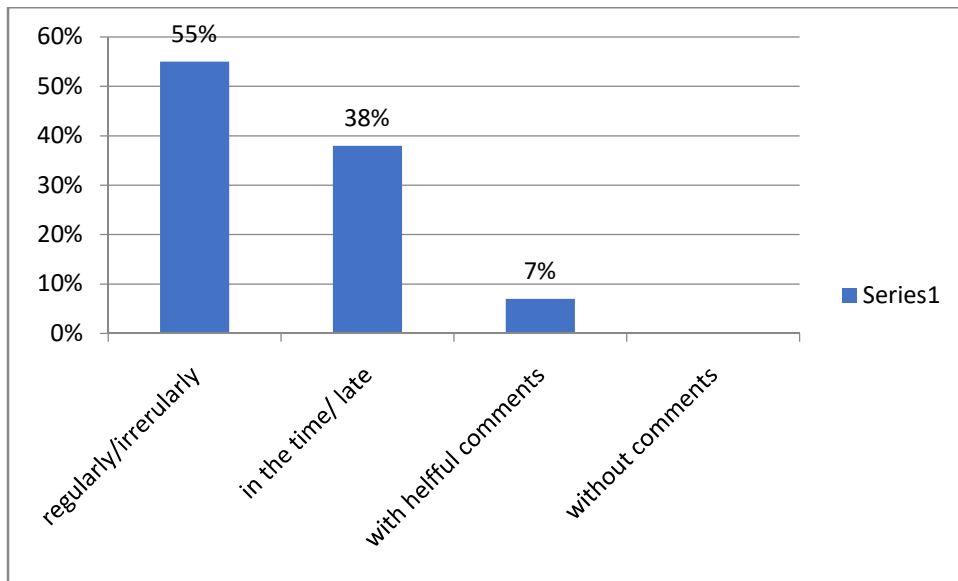
How well did the teachers prepare for class?



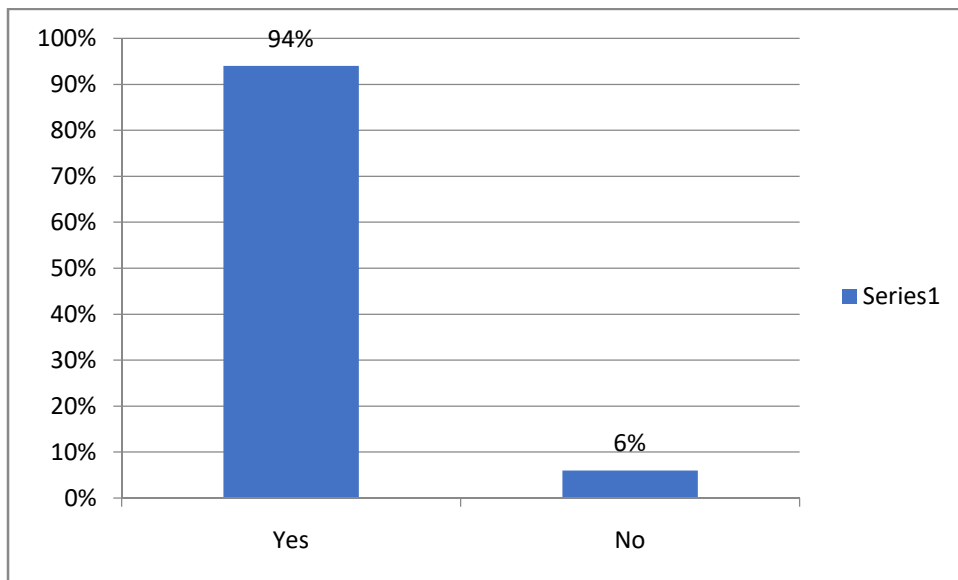
Did the teachers encourage student participation in class?



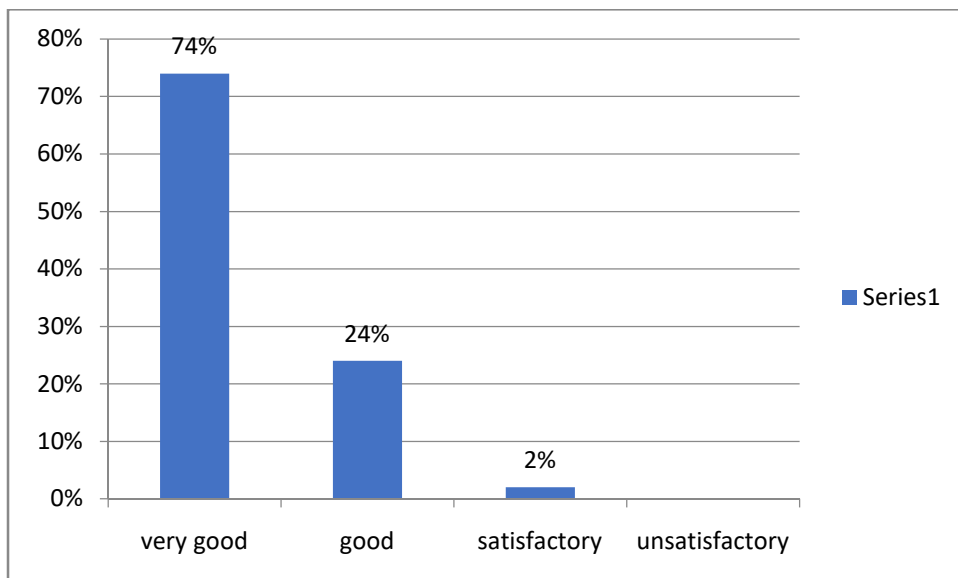
How did the teachers provide feedback on your performance?



Where your written assignments returned and discussed with you?

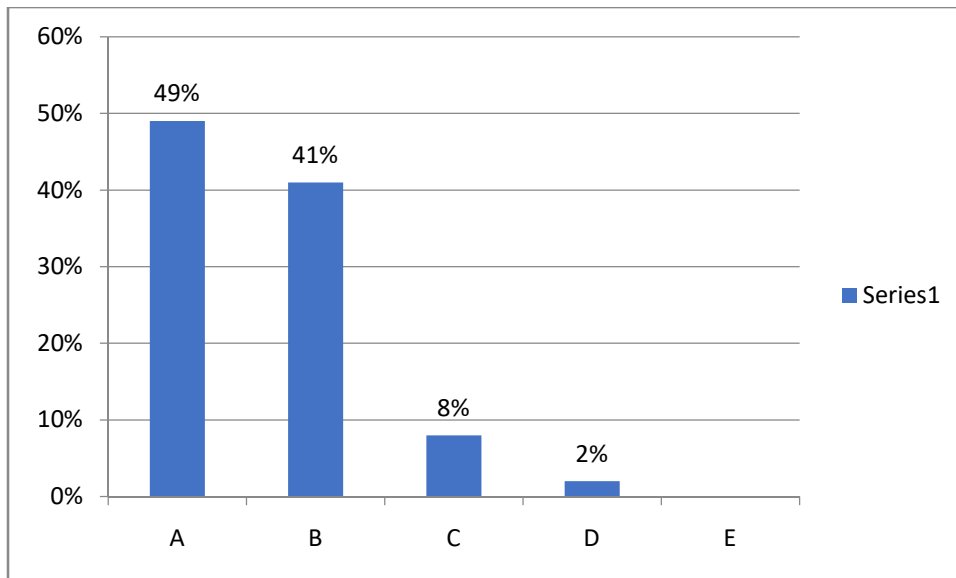


How would you rate the student-teacher relationship in the institution as a whole?

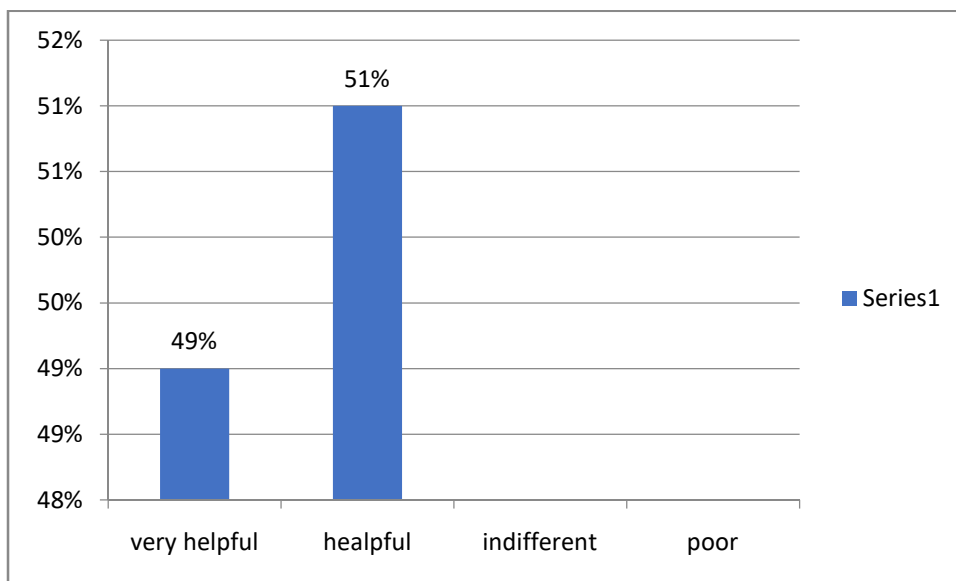


## B. Infrastructure

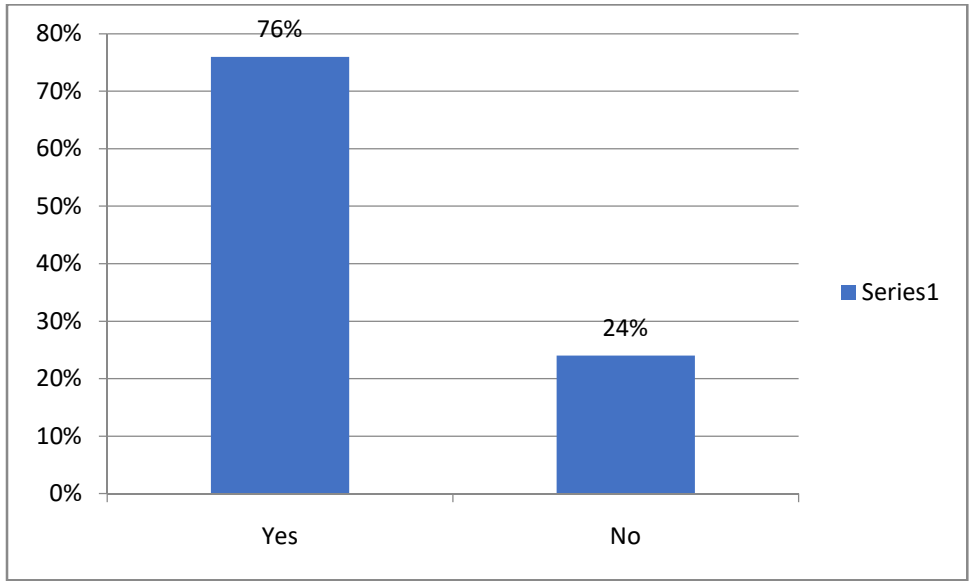
1. How do you rate the overall infrastructure facility of the institution if you had to rate in five points grade scale (highest A-B-C-D-E lowest)



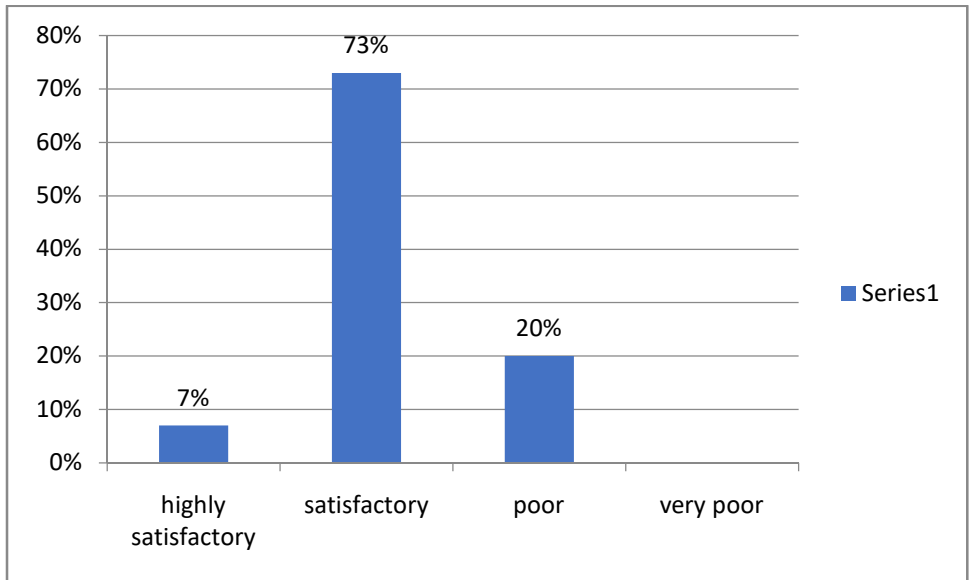
How do you find the institution's administrative office?



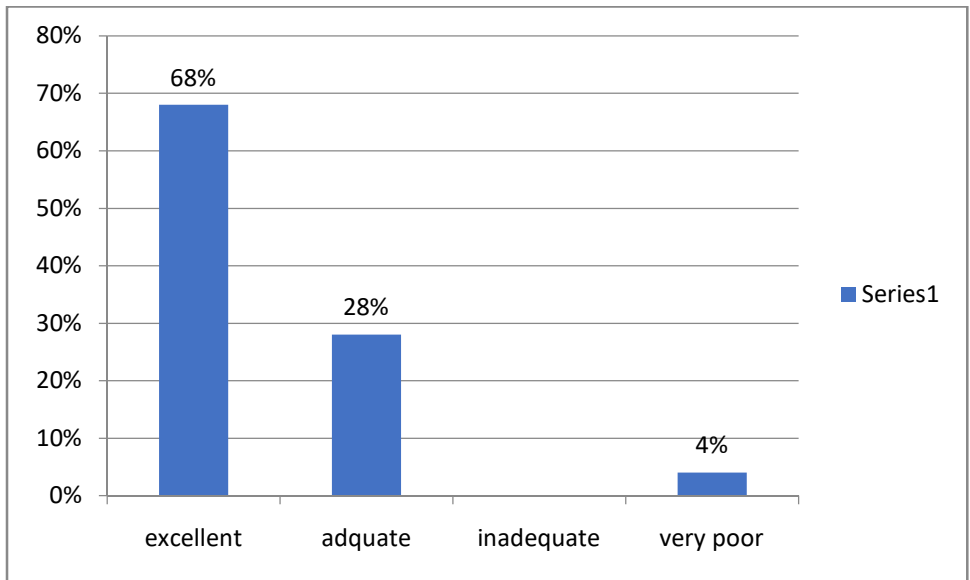
Are you satisfied with the toilet facility available in the institution?



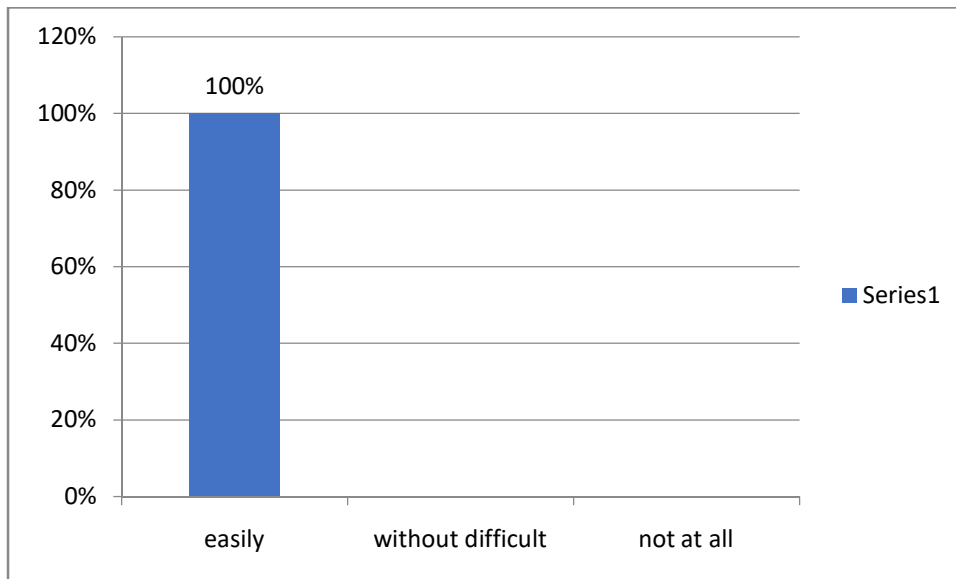
How do you find the drinking water facility of the institution?



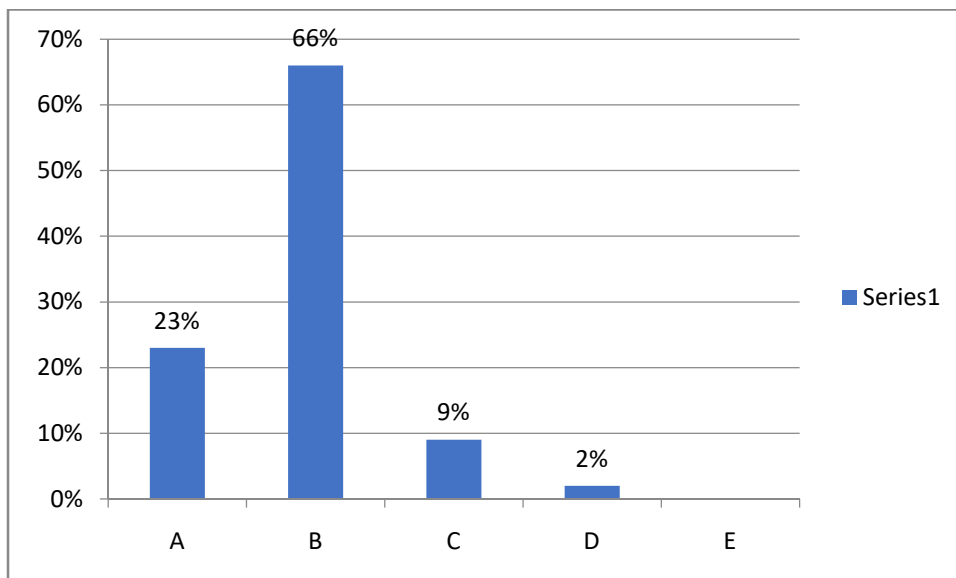
What is your opinion about the library facility of the institution?



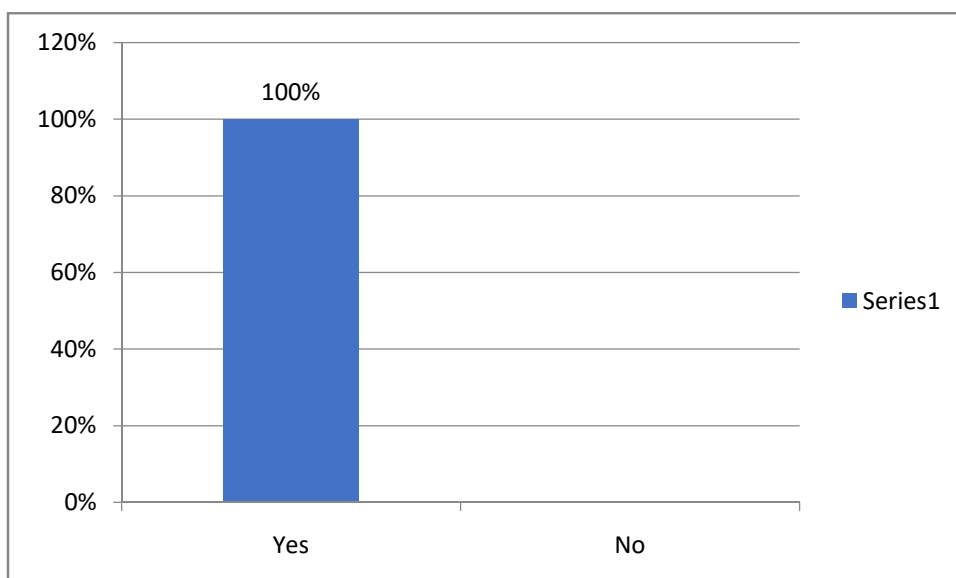
Were you able to get the prescribed textbook and reference book in the library



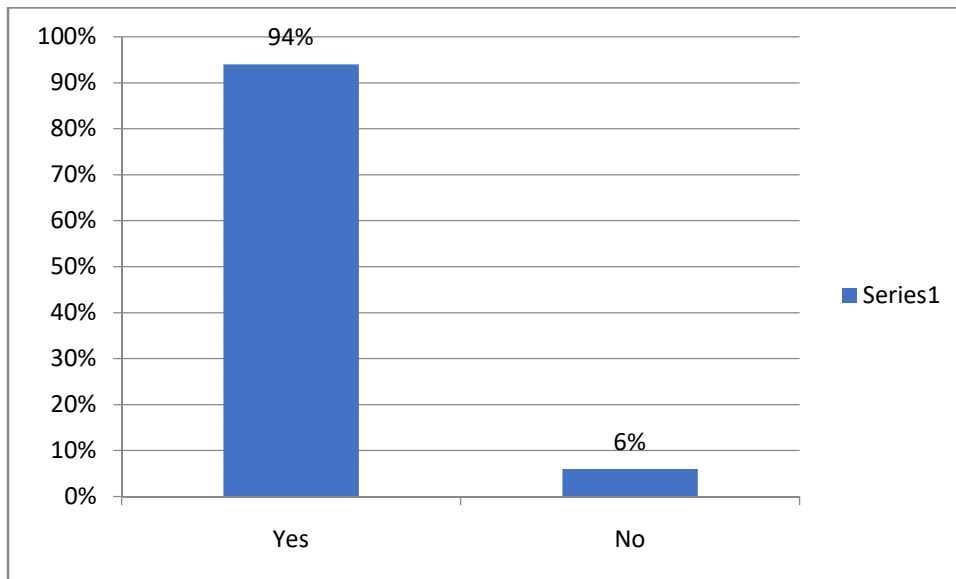
how do you rate the canteen facility available in the institution in a five-point rating scale (highest A-B-C-D-E lowest)



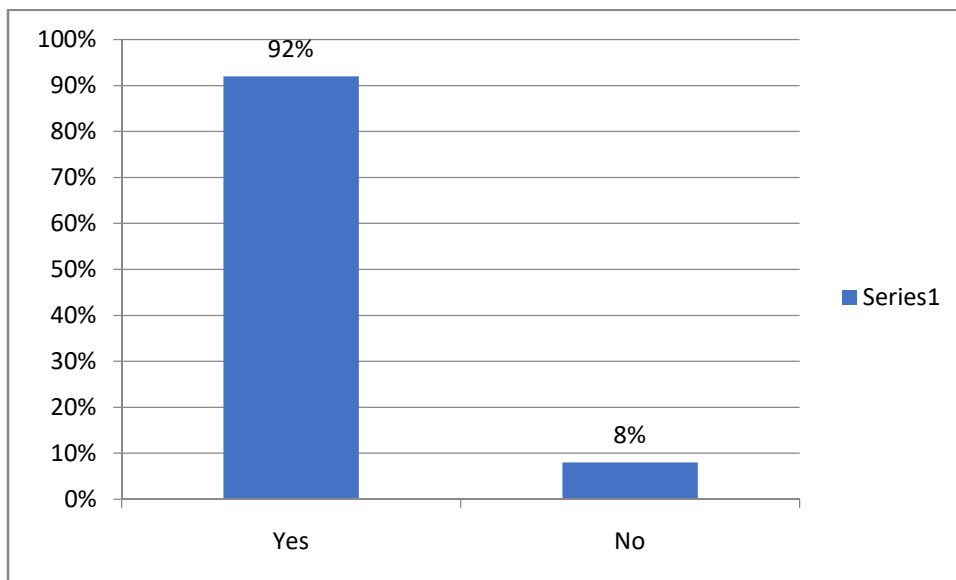
Are you satisfied with the classroom facility of the institution?



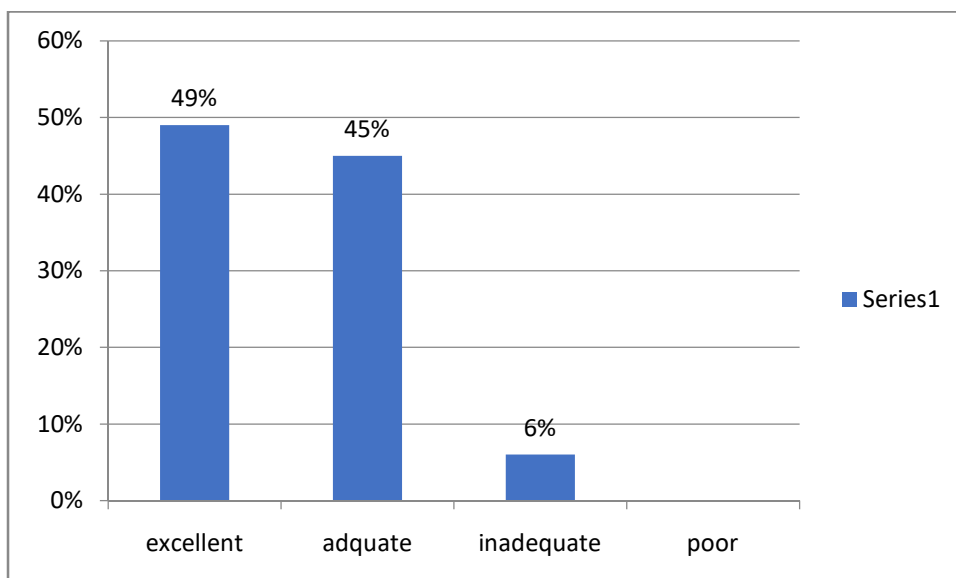
Are you satisfied with the gymnasium of your institution?



Did you have physical instructor in the institution?

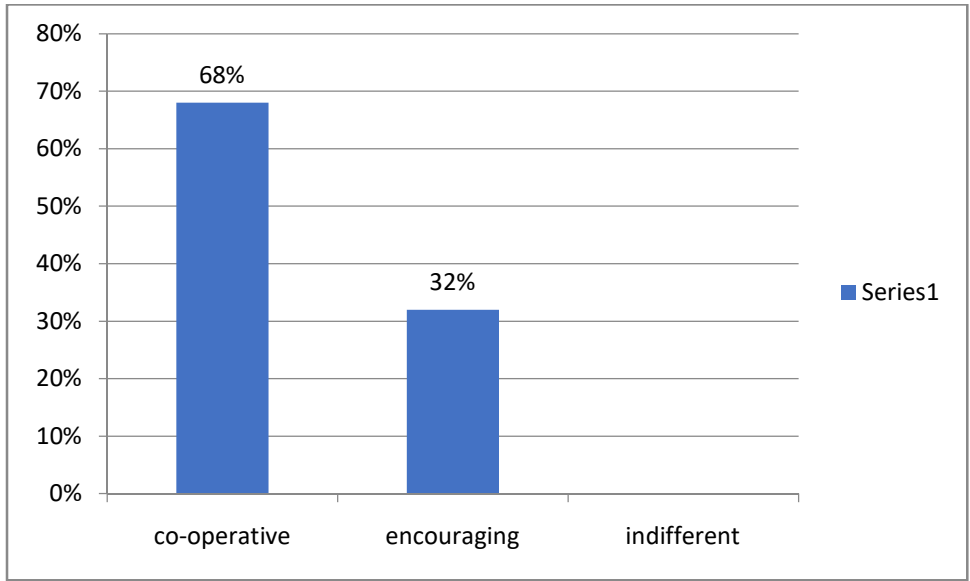


What is your opinion about the playground and sports equipments of your institution?

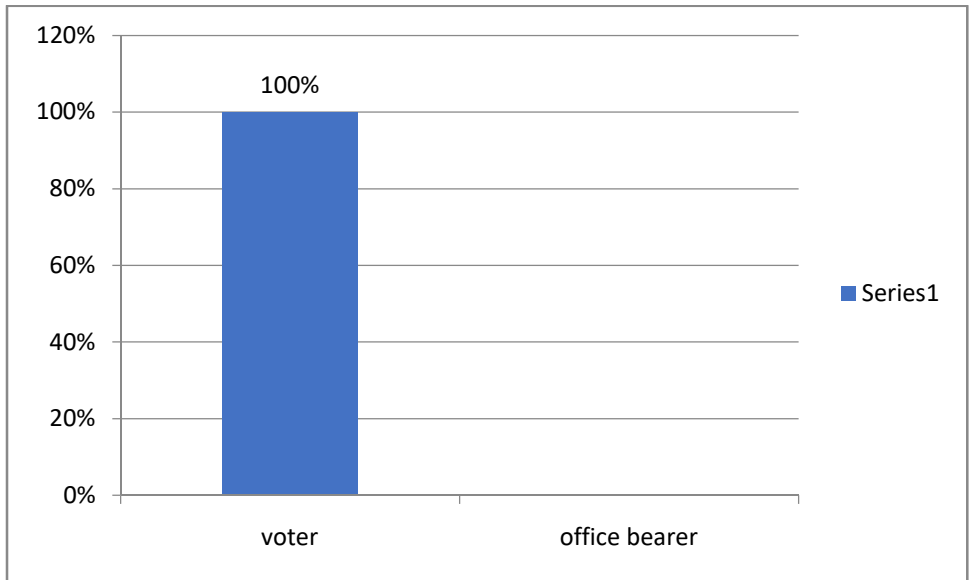


What was the attitude of teachers to non-scholastic activities (Sports, Music, Literary)?

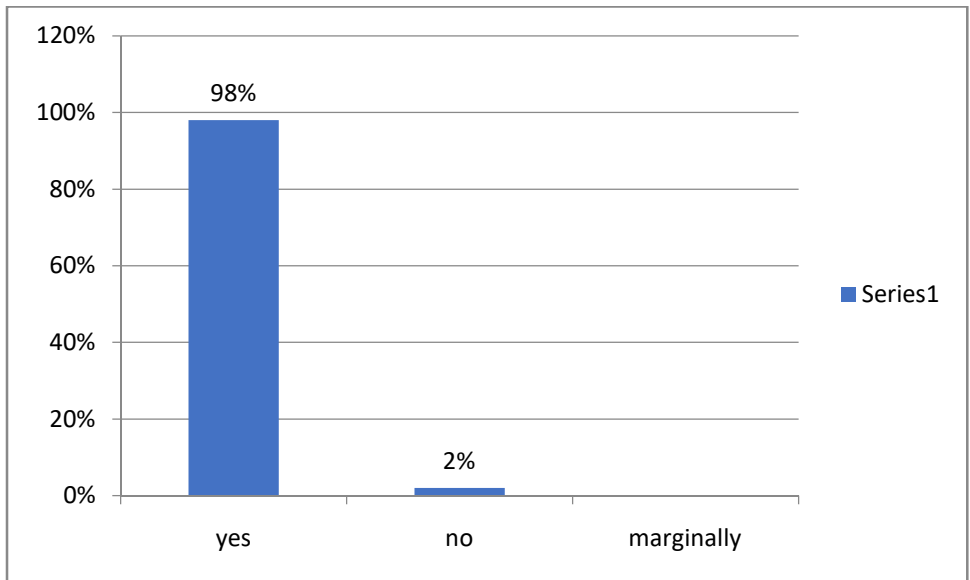




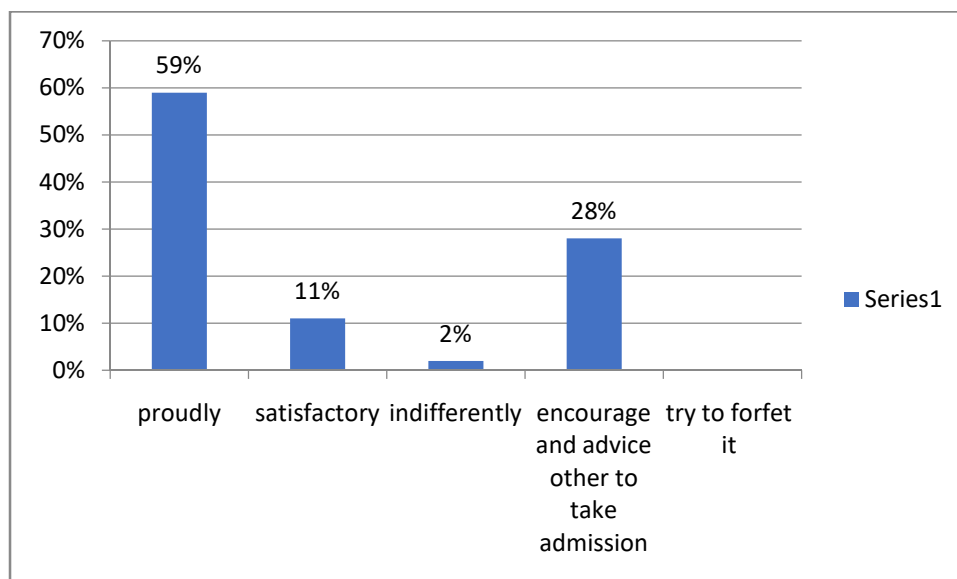
What was your relationship with the student's union?



Has your time at the institution been intellectually enriching?



After leaving the institution how will you talk about it?



The graph above shows that, 100 % of the students got a prospectus giving details of the courses they were going to undertake. 85 % students believed that their choice of subject was driven by their interest in the subject. 60 % students found the syllabus to be adequate. 81 % students felt that the course was manageable. 91 % students found that 90% to 100% of the course was completed before the end semester examination. 78% of the students felt that the teachers prepared thoroughly for class. 96 % of the students affirmed that teachers encourage student participation in class. 55 % of the students believed that the teachers provide feedback on their performance regularly. 94 % of students said “yes” when asked if their written assignments were returned and discussed with them. The percentage of students rating the student-teacher relationship in the institution as very good are 74%. 49 % of students rated the overall infrastructure facility of the institution as A. 51% students find the institution’s administrative office helpful. 76 % students are satisfied with the toilet facility available in the institution. 73 % students find the drinking water facility of the institution satisfactory. 68 % students believed that the library facility of the institution is excellent. 100 % students were able to get the prescribed textbook and reference book in the library easily. 66 % rated the canteen facility available in the institution as B. 100 % of students were satisfied with the classroom facility of the institution. 94 % of students were satisfied with the gymnasium facility of the institution. 92 % of students agreed that they have physical instructor in the institution. 94 % of students believe that they have highly satisfactory playground and sports equipment's in their institution. 68 % students believe that the attitude of teachers to non-scholastic activities is cooperative. 100 % are voters of the student's union. 98 % students think that their time at the institution been intellectually enriching. 59 % of the students chose to encourage and advise others to take admission in this institution after leaving the institution.

#### Suggestions:

The toilet facilities of the institution should be improved.